



This bulletin provides a breakdown of all trauma and injury attendances<sup>1</sup> at Lancaster Royal Infirmary Accident and Emergency (A&E) department between April 2007 and March 2008.

Figure 1 illustrates the number of A&E attendances by month of attendance. June had the highest number of attendances at Lancaster Royal Infirmary department during this time period (n=2,061)

**Figure 1: Total number of A&E attendances by month, April 2007 to March 2008**

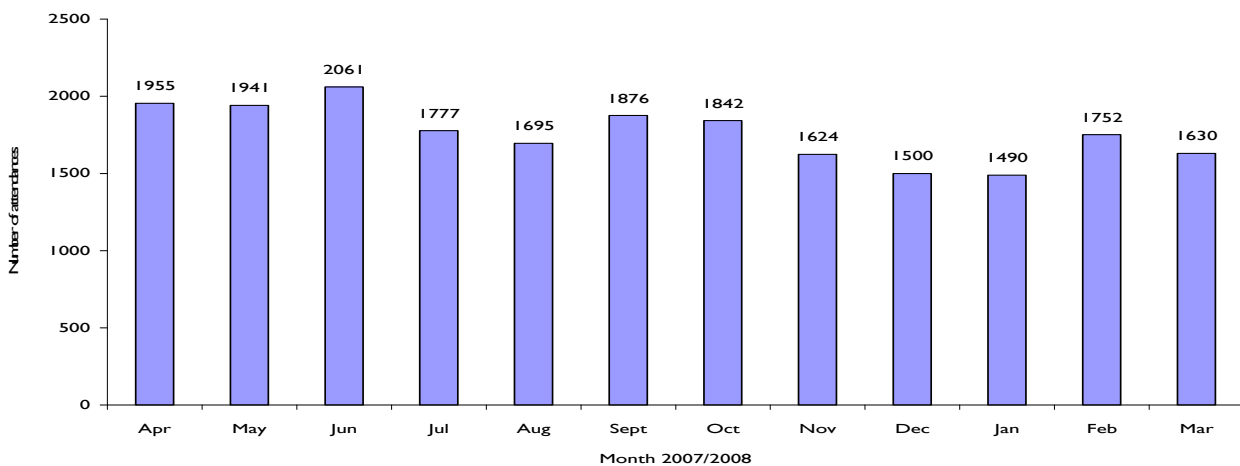
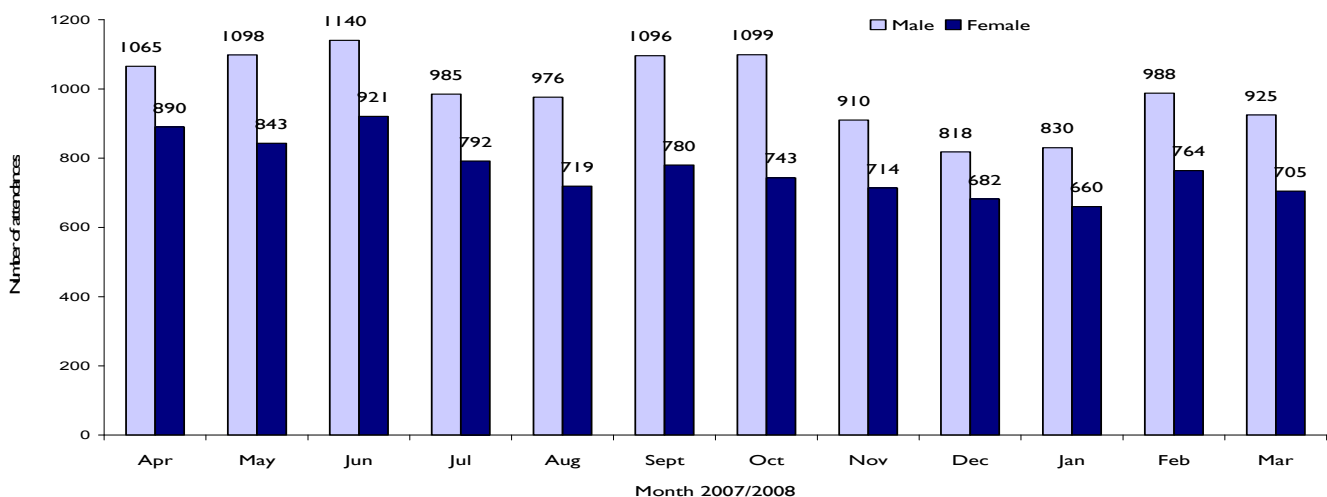


Figure 2 shows A&E attendances by gender. There were more male than female attendances presenting at Lancaster Royal Infirmary A&E. The peak months for both genders were May, June, September and October.

**Figure 2: Gender of A&E attendances by month, April 2007 to March 2008**



<sup>1</sup> Trauma refers to all A&E attendances presenting as a result of an accident or intentional/unintentional injury. This includes all attendances despite of area of residence.

Figure 3 illustrates age group of A&E attendances for each month. The majority of A&E attendances were aged 15-29 plus.

**Figure 3: Age group of A&E attendances by month, April 2007 to March 2008**

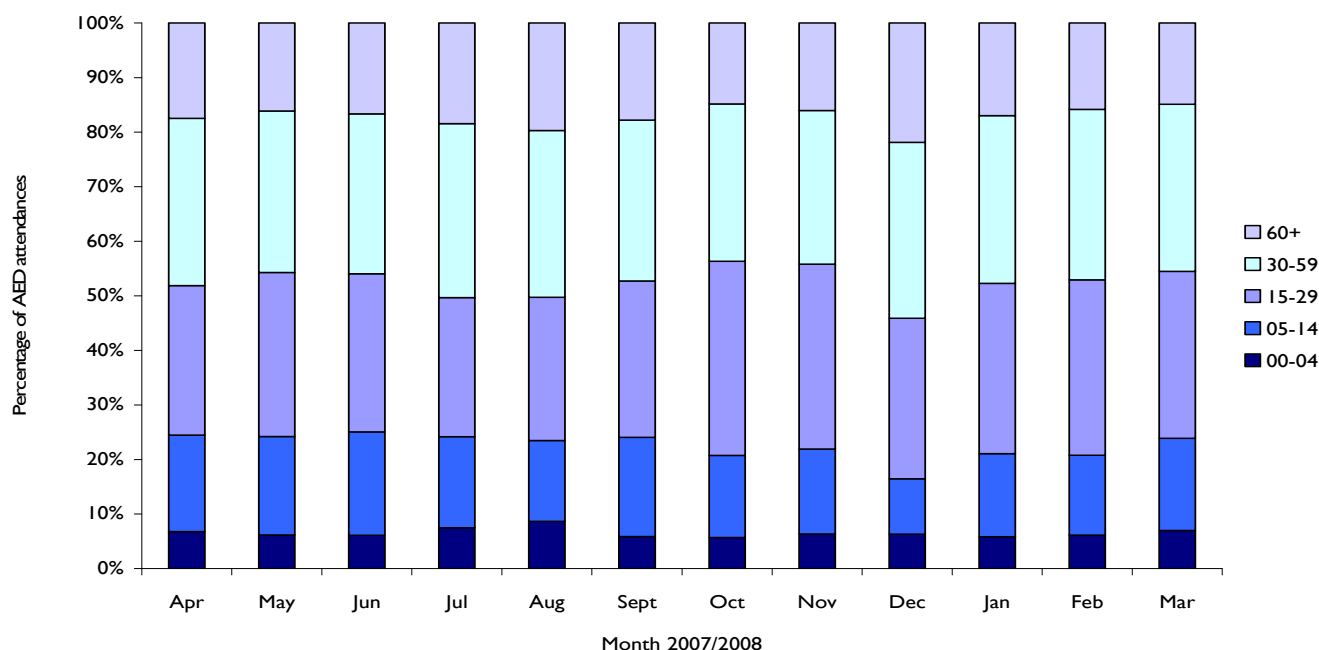


Table 1 details the injury group of A&E attendances. In over three quarters (83%) of attendances, injury group was recorded as other accident. Of those injury groups recorded, sports accounted for 7% of attendances, road traffic accidents 7% and assaults 2%.

**Table 1: A&E attendances by injury group, April 2007 to March 2008<sup>2</sup>**

Patient Group	Apr	May	Jun	Jul	Aug	Sept	Oct	Nov	Dec	Jan	Feb	Mar	Total	%
Assault	49	33	45	41	34	44	46	24	40	50	37	47	490	2
Brought in dead	***	***	***	***	***	***	***	***	***	***	***	***	***	0
Deliberate self-harm	12	13	23	10	14	16	15	12	13	18	11	5	162	1
Other accident	1618	1658	1772	1526	1432	1530	1475	1309	1275	1219	1456	1326	17596	83
Road traffic collision	146	107	128	133	127	142	121	115	102	108	120	127	1476	7
Sports injury	130	129	92	67	88	144	185	164	69	95	128	125	1416	7
<b>Total</b>	<b>1955</b>	<b>1941</b>	<b>2061</b>	<b>1777</b>	<b>1695</b>	<b>1876</b>	<b>1842</b>	<b>1624</b>	<b>1500</b>	<b>1490</b>	<b>1752</b>	<b>1630</b>	<b>21143</b>	<b>100</b>

Table 2 illustrates the location where the incidents occurred for patients presenting to Lancaster Royal Infirmary. The primary trauma and injury incident locations were in the other (44%), home (25%) and in a public place (18%).

**Table 2: Attendances by location of incident, April 2007 to March 2008**

Incident Location	Apr	May	Jun	Jul	Aug	Sept	Oct	Nov	Dec	Jan	Feb	Mar	Total	%
Unknown	9	10	11	9	13	13	20	11	17	0	0	0	113	1
Educational Establishment	64	91	105	63	4	126	130	92	63	101	102	98	1039	5
Home	522	489	536	519	479	466	450	370	430	374	370	362	5367	25
Other	886	882	965	732	713	743	714	755	656	629	814	722	9211	44
Public place	340	314	284	307	351	384	374	250	236	265	324	336	3765	18
Work	134	155	160	147	135	144	154	146	98	121	142	112	1648	8
<b>Total</b>	<b>1955</b>	<b>1941</b>	<b>2061</b>	<b>1777</b>	<b>1695</b>	<b>1876</b>	<b>1842</b>	<b>1624</b>	<b>1500</b>	<b>1490</b>	<b>1752</b>	<b>1630</b>	<b>21143</b>	<b>100</b>

<sup>2</sup> Please note that all numbers less than five have been suppressed (with \*\*\*) in line with patient confidentiality; and if there is only one number less than five in a category then two numbers will be suppressed to prevent back calculations from totals.

Table 3 indicates the method of discharge for attendances to Lancaster Royal Infirmary between April 2007 and March 2008. Almost half of patients (49%) were discharged and did not require follow up treatment, 19% were discharged into the care of their GP and 11% were admitted into hospital.

**Table 3: Discharge method of trauma attendances, April 2007 to March 2008**

Attendance Disposal	Apr	May	Jun	Jul	Aug	Sept	Oct	Nov	Dec	Jan	Feb	Mar	Total	%
Admitted to hospital	230	199	234	189	175	205	163	172	223	170	181	157	2298	11
Discharge to care of GP	397	419	419	354	287	317	304	293	340	264	247	303	3944	19
Discharged Left - before being treated	894	922	992	833	845	926	989	810	628	746	885	827	10297	49
Left - refused treatment	58	61	59	76	60	79	56	56	42	32	55	38	672	3
Not Specified	5	7	6	***	5	***	6	***	***	8	***	9	63	0
Other	***	***	***	***	***	***	***	***	***	***	***	***	***	0
Patient died in department	***	***	6	***	***	***	***	***	***	***	***	***	24	0
Refer to Fracture Clinic	***	***	***	***	***	***	***	***	***	***	***	***	11	0
Refer to OPD Clinic	251	227	224	218	208	239	201	196	176	179	266	202	2587	12
Refer to other HCP	29	32	29	30	26	31	41	34	20	30	42	43	387	2
Restore to ward	29	23	24	30	27	23	17	16	21	15	18	17	260	1
Referred to A&E Clinic	45	32	56	36	49	48	56	35	35	30	42	26	490	2
Transfer to other health care provider	***	***	***	***	***	***	***	***	***	***	***	***	***	0
Total	10	12	10	5	13	***	7	7	9	11	11	***	102	0
	1955	1941	2061	1777	1695	1876	1842	1624	1500	1490	1752	1630	21143	100

## Assaults

There were 490 assault related attendances between April 2007 and March 2008. Figure 4 shows A&E attendances of assault incidents by gender. Nearly three quarters of attendances were male (71%).

**Figure 4: Number of A&E assault attendances by month, April 2007 to March 2008.**

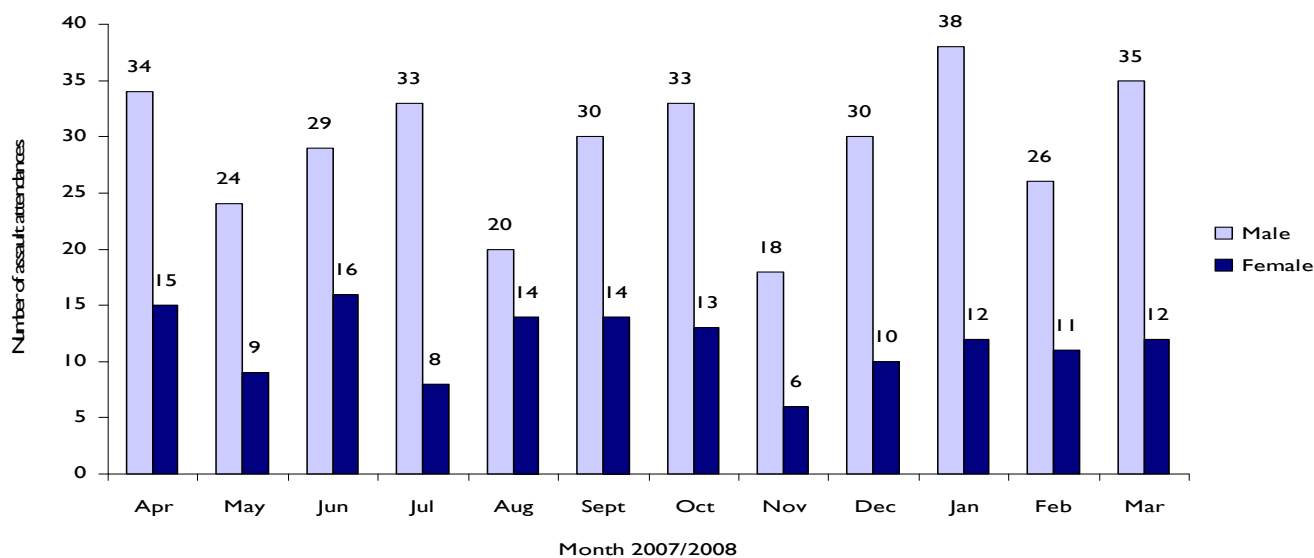


Table 3 illustrates the location where assaults occurred for patients presenting with assault-related injuries. The primary locations of assault were other (45%), public place (35%) and the home (14%).

**Table 3: Incident location of assault by month, April 2007 to March 2008**

Incident Location	Apr	May	Jun	Jul	Aug	Sept	Oct	Nov	Dec	Jan	Feb	Mar	Total	%
Educational Establishment	***	***	***	***	***	***	***	***	***	***	***	***	***	1
Home	10	5	***	8	6	6	***	***	7	9	6	***	70	14
Other	23	16	21	12	13	17	18	14	21	18	17	30	220	45
Public place	14	9	15	18	13	20	22	***	10	22	13	12	172	35
Work	***	***	***	***	***	***	***	***	***	***	***	***	21	4
Unknown	***	***	***	***	***	***	***	***	***	***	***	***	***	0
<b>Total</b>	<b>49</b>	<b>33</b>	<b>45</b>	<b>41</b>	<b>34</b>	<b>44</b>	<b>46</b>	<b>24</b>	<b>40</b>	<b>50</b>	<b>37</b>	<b>47</b>	<b>490</b>	<b>100</b>

Table 4 shows the age group for assault attendances to Lancaster Royal Infirmary AED. The majority of attendances were aged between 15-29 and most prevalent in January.

**Table 4: Age group of assault attendances by month, April 2007 to March 2008**

Age	Apr	May	Jun	Jul	Aug	Sept	Oct	Nov	Dec	Jan	Feb	Mar	Total	%
00-04	***	***	***	***	***	***	***	***	**	***	***	***	***	0
05-14	6	***	***	***	5	***	***	***	***	6	***	7	48	10
15-29	19	17	27	25	22	25	32	14	18	28	25	26	278	57
30-59	22	12	13	14	6	15	9	8	20	15	8	14	156	32
60+	***	***	***	***	***	***	***	***	***	***	***	***	***	2
<b>Total</b>	<b>49</b>	<b>33</b>	<b>45</b>	<b>41</b>	<b>34</b>	<b>44</b>	<b>46</b>	<b>24</b>	<b>40</b>	<b>50</b>	<b>37</b>	<b>47</b>	<b>490</b>	<b>100</b>